

►► Venting chimney BKA 1

Completely made from stainless steel

Venting chimney DN 150 (154 mm outside dia.), with insect-proof stainless steel screen, mesh 1x1 mm, free sectional area 37%, with attached hood, completely made of 1.4301/1.4307 (AISI 304 L) stainless steel.

I. Vertical installation

Length L = _____ mm

II. Wall installation

Flange for bolted fixing to the outer tank wall, drain trap DN 20 for condensate with stainless steel screen, lateral distance from wall to pipe axis 227 mm. Vertical pipe length L = _____ mm.

Completely shielded arc welded, acid-treated in a pickling bath and passivated.

III. Vertical installation with bend

For the refurbishment of vertical air vents directly over the water chamber. Pipe for insertion into the customer's vent pipe, for mounting with clamping flange and roller cages, welded in condensate outlet DN 20 with stainless steel screen.

Inside diameter of the customer's vertical vent pipe
D1 = _____ mm.

Height above ground B = _____ mm

Air vent, completely shielded arc welded, acid-treated in a pickling bath and passivated.

Options I for vertical installation:

- Adjustable wall flange
- Welded-on wall flange
- Pipe saddle DN 150, distance from wall to pipe axis 227 mm ± 30 mm
- PVC connection possible (only for manhole interior)

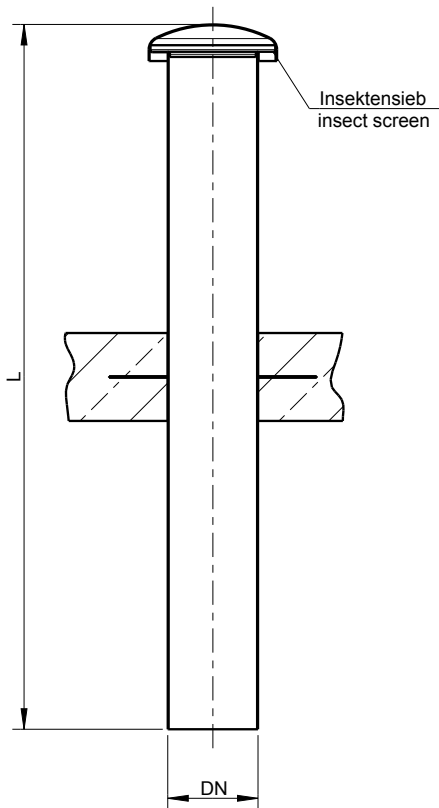
Options II for lateral installation:

- Guard grille for dowelling to the inner tank wall, mesh 10 x 10 mm, free cross section., 55%
- Rubber seal and fixing material for the dowel flange
- Pipe saddle DN 150, distance from wall to pipe axis 227 mm ± 30 mm
- Additional equipment for all three installation options:
 - Replacabable pollen filter
 - Energy-independent solar ventilation
 - Tubular biofilter within the ventilating chimney for odour elimination
- 1.4571/1.4404 (AISI 316 L) stainless steel

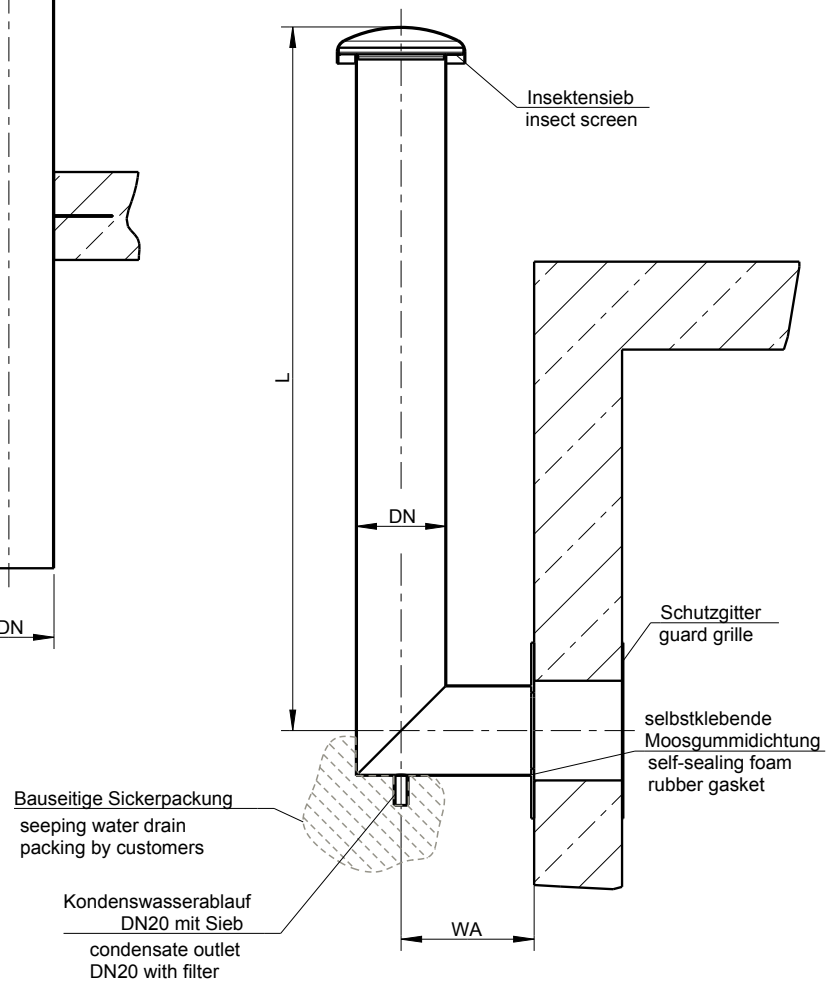
For non-standard items, please consult HUBER Berching:

- different pipe diameter

I. Senkrechter Einbau
I. vertical installation



II. Seitlicher Einbau
II. wall installation



Order no.	Length, only for vertikal typ (I.)
BKA 1000	1000
BKA 1500	1500
BKA 2000	2000
BKA 2500	2500
BKA 3000	3000
BKA 3500	3500

HUBER SE

Industriepark Erasbach A1 · D-92334 Berching
Phone: + 49 - 84 62 - 201 - 0 · Fax: + 49 - 84 62 - 201 - 810
info@huber.de · Internet: www.huber.de

Subject to technical modification
Drawing No. 50945691, 10.2015

Venting chimney BKA 1